

Elkhart County Jail – Kitchen Floor Replacement

ADDENDUM NO. 1

Elkhart County Jail – Kitchen Floor Replacement

March 17, 2025

BOARD OF COUNTY COMMISSIONERS

ELKHART COUNTY, INDIANA

TO: All bidders and others to whom Bid Documents for the above referenced Project have been issued.

The items included in this Addendum are to become a part of the original Bid Documents as if included therein. Only these items are to be altered. The remainder of the original bid documents maintains validity in their entirety.

1. Division 2, SP1, Section 3 is hereby replaced with the following:

3. CONSTRUCTION DURATION AND SITE ACCESS

Following notice to proceed, the contractor shall make written request to the Buildings and Grounds Director the contractors preferred mobilization date. The Buildings and Grounds Director will coordinate the approval of the proposed construction schedule with the Elkhart County Sheriff. Access to any part of the jail shall be limited to 15 days and shall not commence without written approval from the Elkhart County Sheriff's Office.

Access to site shall be granted via the loading dock as described in the project plans.

Access to the site shall be limited to 15 consecutive calendar days (including weekends), and shall be limited from 6:00 AM to 5 PM each day.

The work shall be completed in two phases as described as Area 1 – Main Kitchen and Area 2 – Staff Dining in the attached plans. Area 1 shall remain a fully functioning kitchen supporting the jail while work is occurring in Area 2. Subsequently, Area 2 will be used as a fully functioning kitchen supporting the jail while work is occurring in Area 1.

2. Appendix A – Project Plans, are hereby replaced with the attached plan sheets.
3. Pre Bid Meeting Minutes and sign in sheet are attached.

Appendix A Project Plans

For

ELKHART COUNTY JAIL – KITCHEN FLOOR REPLACEMENT

OWNERS:

ELKHART COUNTY, INDIANA, ACTING THROUGH
ITS BOARD OF COUNTY COMMISSIONERS
BUILDINGS AND GROUNDS DEPARTMENT
26861 COUNTY ROAD 26
ELKHART, IN, 46517



Elkhart County Buildings and Grounds Department
26861 County Road 26, Elkhart, IN, 46514
Phone: (574) 891-2204



PRELIMINARY

THIS DOCUMENT IS RELEASED FOR THE PURPOSE OF INTERIM REVIEW AND IS NOT INTENDED FOR CONSTRUCTION, BIDDING OR PERMIT PURPOSES.

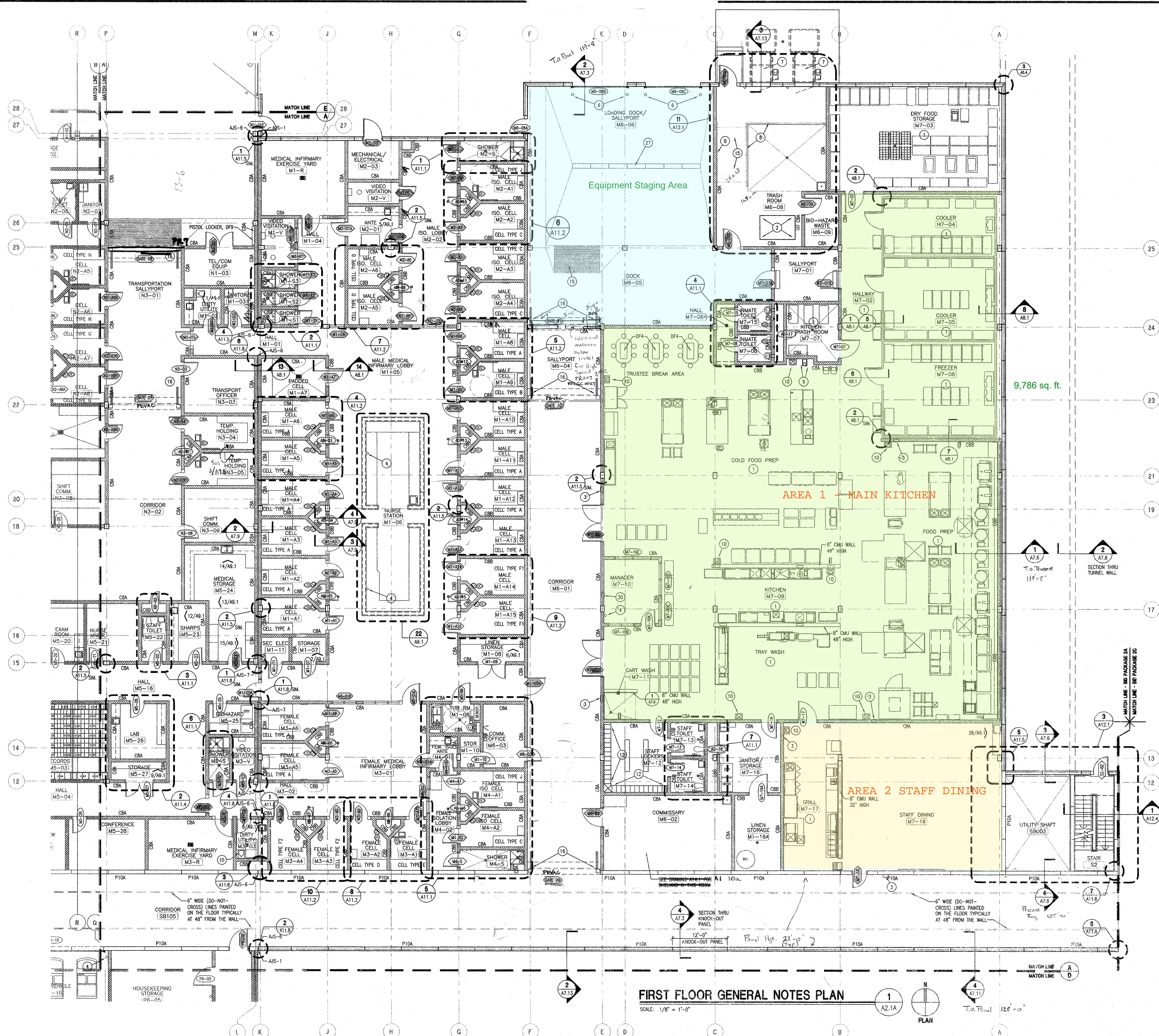
REV	DESCRIPTION	DATE
-	-	-
-	-	-
-	-	-
-	-	-
-	-	-
-	-	-

**ELKHART COUNTY JAIL
KITCHEN FLOOR REPLACEMENT**

SITE LOCATION MAP

DESIGNED:	DES
CHECKED:	DESCHECK
DRAWN:	DRAWN
CHECKED:	DWGCHECK

HORIZONTAL SCALE	1"=20'
VERTICAL SCALE	1"=5'
SHEETS	4 OF 120
PROJECT	###



- ### PLAN KEY NOTES
- SEE THE FOOD SERVICE EQUIPMENT DRAWINGS FOR EQUIPMENT IN THE ROOM INDICATED.
 - GREASE TRAP; SEE PLUMBING DRAWINGS.
 - FIRE EXTINGUISHER CABINET WITH FIRE EXTINGUISHER.
 - WALL MOUNTED FIRE EXTINGUISHER.
 - FLY FAN WALL-MOUNTED OVER THE DOOR; SEE KITCHEN EQUIPMENT DRAWINGS.
 - 6" DIAMETER STEEL BOLLARD. SEE STRUCTURAL.
 - TRASH COMPACTOR ASSEMBLY FURNISHED AND INSTALLED BY OWNER. CONTRACTORS PROVIDE WALL OPENINGS AND DISCONNECT SWITCHES.
 - METAL PIPE RAILING. SEE DETAIL INDICATED.
 - ELECTRIC WATER COOLER. SEE PLUMBING DRAWINGS.
 - LAVATORY OR SINK - SEE PLUMBING DRAWINGS. PROVIDE PAPER TOWEL DISPENSER AND SOAP DISPENSER.
 - TYPE 1 LOCKERS; SEE 4/A8.4.
 - TYPE 2 LOCKERS; SEE 4/A8.4.
 - TYPE 3 AND 4 LOCKERS; SEE 4/A8.4.
 - WOVEN WIRE MESH PARTITION AND DOOR.
 - RAMP; SEE STRUCTURAL DRAWINGS.
 - HIGH SPEED ELECTRONIC SECURITY GATE ASSEMBLY PER SPECIFICATION SECTION 11198.
 - RECESSED WALK-OFF MAT.
 - RECESSED ACTUATOR FOR DOOR OPERATOR MTD AT 48" A.F.F. (REF SPEC. SECTION 08710)
 - KEY SWITCH FOR DOOR OPERATOR CONTROLS. (REF. SPEC. SECTION 08710)
 - WALL-MOUNTED HOOK
 - LOCKER BENCH.
 - 5'-4" HIGH CMU WALLS WITH GROUND FACE ON ALL EXPOSED SURFACES. SEE DETAIL 6/A7.8.
 - TOILET PARTITION; SEE SPECIFICATION 10155.
 - ACCESSIBLE TOILET PARTITION STALL; SEE SPECIFICATION 10155; PROVIDE THE REQUIRED CLEARANCE INSIDE.
 - URINAL SCREEN; SEE SPECIFICATION 10155
 - STEEL ROOF ACCESS LADDER.
 - FLOOR INSTALLED TRENCH DRAIN SEE PLUMBING DRAWINGS AND SPECIFICATIONS
 - HARDWOOD CHAIRRAIL (SEE DETAIL 10/A9.5)
 - BUILDING CONTROL JOINT- REF STRUCTURAL DRAWINGS)
 - KNIFE SECURITY CABINET- REF DRAWING 19/F58
 - HORIZONTAL WINDOW BLINDS
 - FIRE ALARM ANNUNCIATION PANEL
 - BUILDING DEDICATION PLAQUE
 - EVIDENCE STORAGE LOCKER. SEE DETAIL 4/A8.4
 - CORNER GUARD

INTERIOR PARTITION LEGEND

* SEE A1.3 FOR SECURITY WALL PLAN

CONCRETE MASONRY UNITS - C

SYMBOL	DESCRIPTION
4	3-5/8" C.M.U.
6	5-5/8" C.M.U.
8	7-5/8" C.M.U.
12	11-5/8" C.M.U.

HEIGHT

- A EXTEND MASONRY TO THE UNDERSIDE OF STRUCTURAL DECK.
- B EXTEND MASONRY TO 8" ABOVE CEILING MINIMUM.

FURRING

- 1 ON ONE SIDE OF THE WALL, PROVIDE 2-1/2" METAL FURRING @ 16" O.C. WITH 5/8" TYPE "X" GYPSUM BOARD ON 8" CMU WALL.
- 2 ON BOTH SIDES OF THE WALL, PROVIDE 2-1/2" METAL FURRING @ 16" O.C. WITH 5/8" TYPE "X" GYPSUM BOARD ON 8" CMU WALL.

SEE STRUCTURAL DRAWINGS FOR CMU REINFORCING REQUIRED

GROUND FACE MASONRY UNITS - G

SYMBOL	DESCRIPTION
4	3-5/8" C.M.U.
6	5-5/8" C.M.U.
8	7-5/8" C.M.U.
12	11-5/8" C.M.U.

HEIGHT

- A EXTEND MASONRY TO THE UNDERSIDE OF STRUCTURAL DECK.
- B EXTEND MASONRY TO 8" ABOVE CEILING MINIMUM.

FINISH - C GROUND FACE ON BOTH SIDES OF WALL

FURRING

- 1 ON NON-GROUND SIDE OF THE WALL, PROVIDE 2-1/2" METAL FURRING @ 16" O.C. WITH 5/8" TYPE "X" GYPSUM BOARD ON 8" CMU WALL.

SEE STRUCTURAL DRAWINGS FOR REINFORCING REQUIREMENTS.

PRECAST CONCRETE PANEL WALL - P

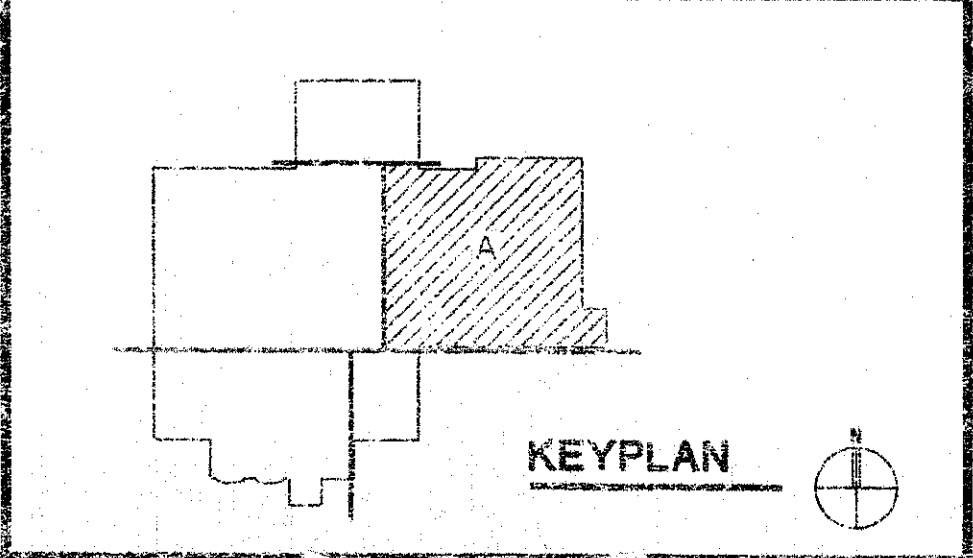
SYMBOL	DESCRIPTION
10	PRECAST CONCRETE PANELS

HEIGHT

- A EXTEND PRECAST PANELS UP TO HEIGHT PER THE WALL SECTION INDICATED.

SEE STRUCTURAL DRAWINGS FOR REINFORCING REQUIREMENTS.

- ### GENERAL NOTES
- SEE DRAWING A0.1 FOR GENERAL NOTES, SYMBOLS AND ABBREVIATIONS.
 - WHERE A "CONCRETE BENCH" IS NOTED ON THE PLAN, SEE DETAILS 2 THRU 5 ON DRAWING A7.8.
 - REFER TO ARCHITECTURAL DIMENSION PLANS (AD SERIES) FOR DIMENSIONS.
 - REFER TO ARCHITECTURAL A11 SERIES PLANS FOR CELL TYPE DETAILS.
 - REFER TO SHEET A4.1 FOR ROOF INFORMATION.
 - SEAL ALL FLOOR PENETRATIONS AT SECOND FLOOR.



FIRST FLOOR GENERAL NOTES PLAN
SCALE: 1/8" = 1'-0"

ELKHART COUNTY CORRECTIONAL COMPLEX
B.P. #2A - SERVICES BUILDING
 ARCHITECTURAL
 FIRST FLOOR - GENERAL NOTE PLAN

DRAWING NUMBER
A2.1A

Elkhart County Jail – Kitchen Floor Replacement

Pre-Bid Meeting Minutes

March 14, 2025, 9:00 AM

26861 County Road 26, Elkhart, IN 465217

1. Introductions

- County Staff

Primary Contact:

Joe Leichtman

jleichtman@elkhartcounty.com

Office – (574) 891-2204

Cell – (574) 320-7605

- Please use the sign in sheet

2. Kitchen Floor Replacement Project

- Project Overview
 - Scope-Replace the flooring system in the Elkhart County Jail Kitchen.
 - Remove around 9800 sft of existing tile and cove base molding
 - Replace with Ploy-Crete MDB flooring as specified and install rubber cove base molding
 - Remove and reset kitchen equipment, as specified
 - Loading dock may be used for temporary storage
 - **The project must be completed in two phases such that the Staff Dining Area can be utilized as a temporary kitchen for kitchen staff during the floor replacement in the main kitchen.**
 - Earliest Date to Begin: April 10th, 2025
 - Completed by August 1st, 2025
 - 15 consecutive day maximum construction duration
 - Access hours from 6 am to 5 pm, daily (including holidays/weekends)
 - Formal approval process for schedule approval. Access jail through loading dock.
 - Written request with schedule and mobilization date to Joe Leichtman
 - Approval dependent on county resources to provide access
 - **The County will require a two week lead time to prepare for contractor mobilization**

3. Important Dates

- Bids are due Monday, March 24th, 2025 at 9:00 a.m., at the Commissioner's office, 117 N 2nd Street in Downtown Goshen. Not the Buildings and Grounds office, Sheriff's office, or jail.

- Questions will be answered until 12:00 noon Friday, March 21st, 2025. All questions will be answered via addendum. Please check the website for an addendum at the close of business on Friday.
- Start Date – **As early as April 10, 2025, following Notice to Proceed required schedule approval**
- Substantial Completion Date – **15 days after approved mobilization date, \$1000/day Liquidated Damages**
- Final Completion Date – **August 1, 2025, \$1000/ day Liquidated damages.**
- Any addendums will be posted on the website, www.elkhartcounty.com. Please acknowledge them on the bid form.
- Minutes for this meeting will be posted on the website. No notifications will be sent. Please check the website.

4. Pay Estimates

- All pay estimates will have a 10% retainage
- Pay applications may be submitted monthly

5. General items

- Bid Bond required
- Performance Bond required
- Maintenance Bond for 3 years after the completion of the project.

Contractor Questions?

Q: Do contractors employees special training or background check to enter the work area?

A: No. County staff will let contractor staff into the loading dock area at the beginning of the day and end of the day. County staff will take inventory of contractors equipment and tools at the beginning and end of each day.

Q: Why are two layers of floor product proposed?

A: The County is proposing two layers of ¼" floor product to match the existing floor thickness and avoid finished floor height issues.

