

FORAKER, SOUTHWEST, AND TECUMSEH WASTEWATER SYSTEM

ELKHART COUNTY



ELKHART COUNTY REGIONAL SEWER DISTRICT

Providing Utility Services to
Unincorporated Areas of Elkhart County



PUBLIC INFORMATION MEETING
AUGUST 2022

LOCHGROUP.COM



Public Meeting Presentation Agenda

- **Sign-in**
- **Introductions**
- **Presentation**
 - Elkhart County Regional Sewer District Description
 - History & Need for Project
 - Proposed Collection System Map
 - Proposed Collection System Technology
 - Proposed Treatment at Existing Nappanee WWTP
 - Ownership / Easements
 - Construction Cost / Funding / Estimated User Rates
 - Project Bidding, Construction, & Operation
- **Public Comments**
 - Be Respectful to Each Other
 - Comments and Questions are Welcome at the End of the Presentation
 - Written Comments can be Submitted
 - 3-Minute Maximum Comment Period per Person

Introductions

- Elkhart County Representatives
- Elkhart County Regional Sewer District Representatives
- Design Engineer Representatives

Elkhart County Regional Sewer District

District's Description

- The Elkhart County Regional Sewer District is an independent political entity authorized by the Indiana Department of Environmental Management (IDEM). The district has a board with 7 voting members that governs the entity.

District's Focus

- The district's focus is the long-term benefits to the public health, safety, and welfare of its customers, the community and the environment as it relates to sanitary issues. The district serves areas that have limited resources or needs solutions to sanitary issues.

Existing Services Areas

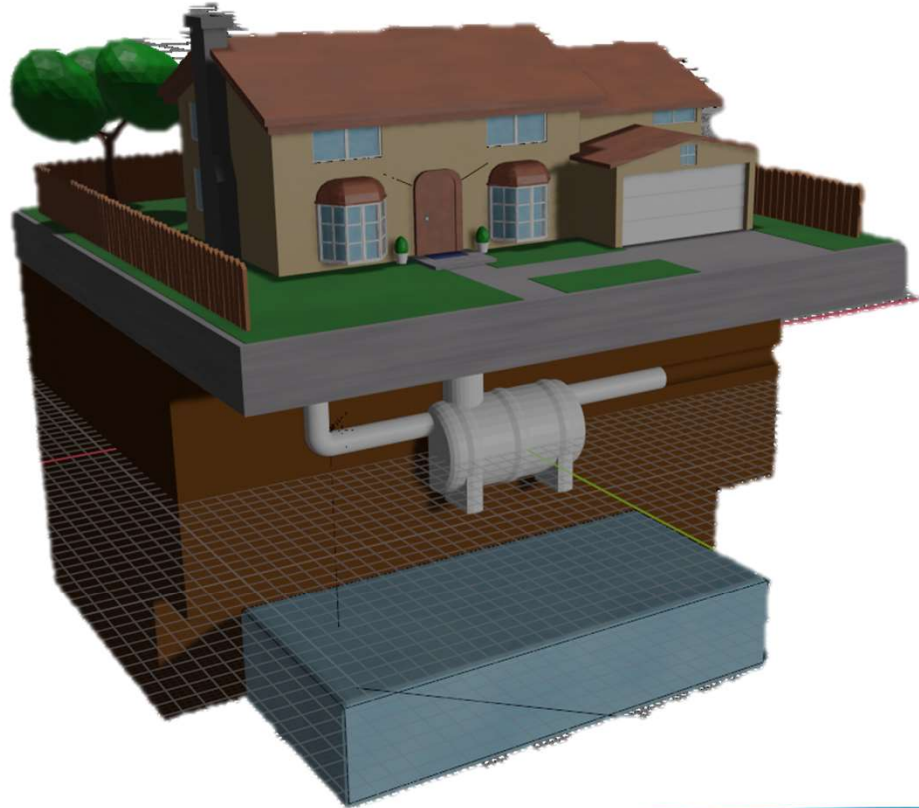
- Heaton Lake
- SR 13 Interchange

History & Need for Project

- Countywide Utility Master Plan - 2008
- Wastewater Planning - 2010 to 2012
- Updated Wastewater Planning - 2016 to 2017
- ARPA Funds to County from Federal Government - 2021
- SWIF Grant Notice of Award of \$1.875 Million - 2021

Need for Project

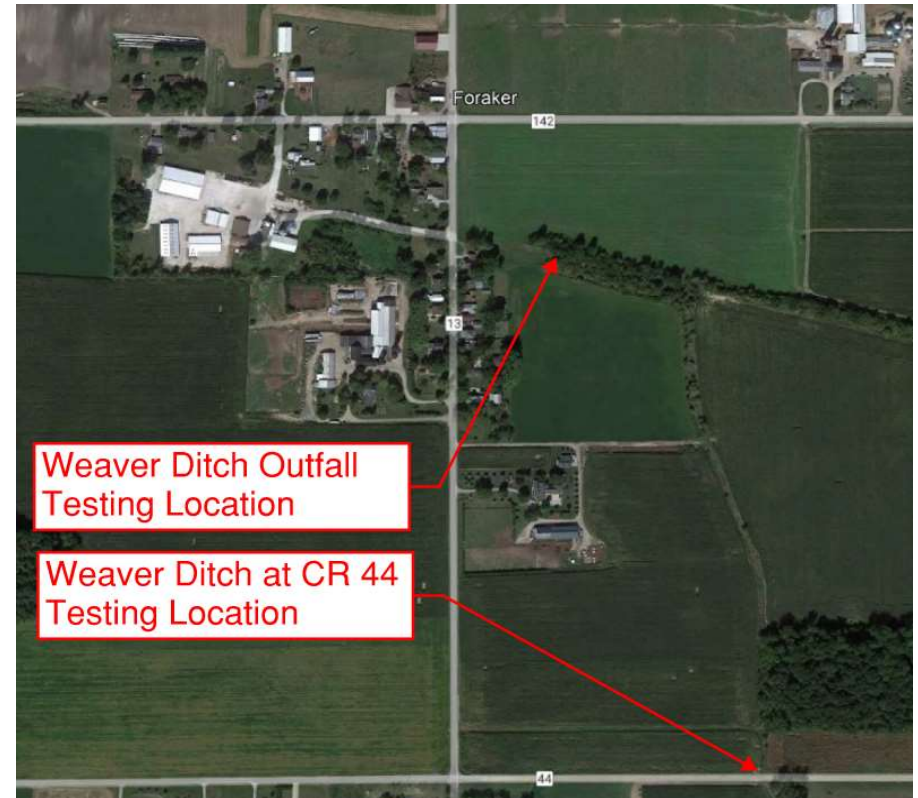
Septic System Operation



Need for Project

Foraker Community

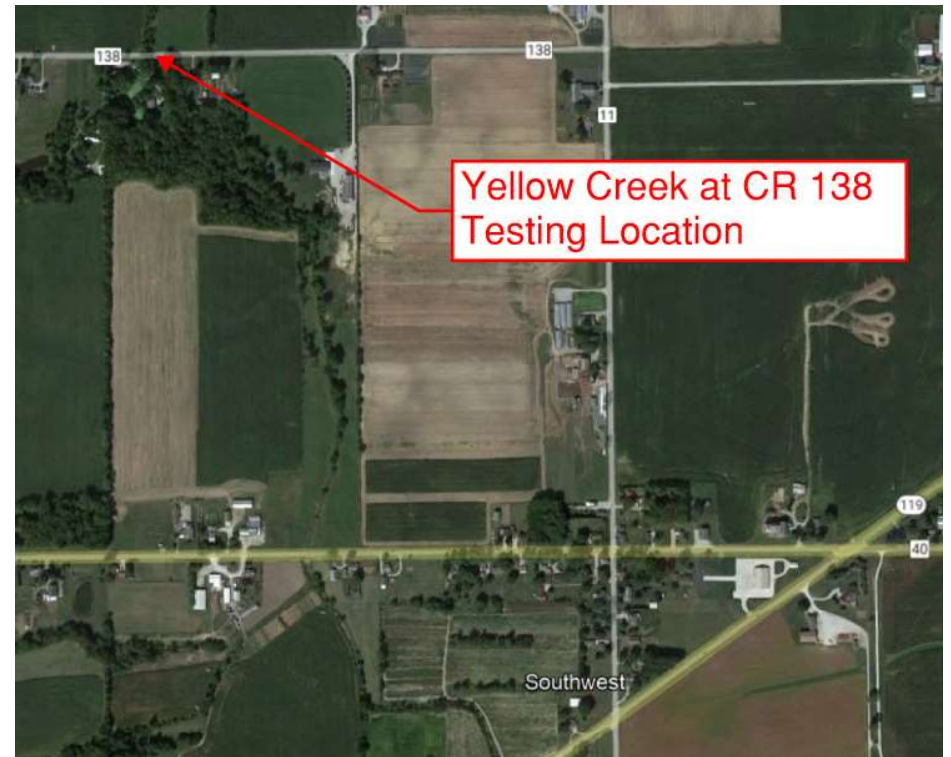
- Known Septic System Issues
- Testing in 2016
 - DNA testing indicated presence of human fecal pollution
 - Additional testing indicated presence of pharmaceuticals
- Weaver Ditch at CR 44 Testing
 - 2010 to 2018
 - Over 98% of 146 samples tested above water quality standard of 235 CFU/100mL for E-Coli
- Weaver Ditch Outfall Testing
 - Ongoing since 2019
 - 100% of 40 samples tested above water quality standard of 235 CFU/100mL for E-Coli



Need for Project

Southwest Community

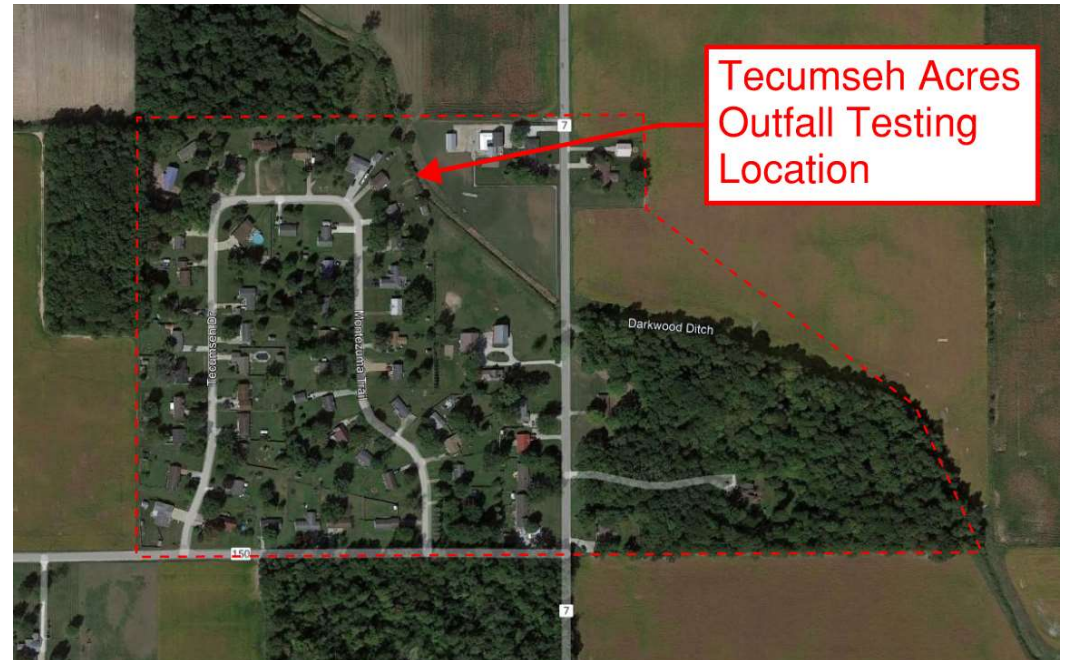
- Known Septic System Issues
- Testing in 2012
 - Indicated presence of pharmaceuticals
- Yellow Creek at CR 138 Testing
 - Ongoing since 2010
 - Over 98% of the 228 samples tested above water quality standard of 235 CFU/100mL for E-Coli



Need for Project

Tecumseh Community

- Known Septic System Issues
- Tecumseh Acres Outfall Testing (2012)
 - Indicated presence of pharmaceuticals indicative of human use
- Tecumseh Acres Outfall Testing (2022)
 - Indicated E. Coli levels above the water quality standard of 235 CFU/100mL



Participation in Project

- If you are within the boundaries shown in this presentation, you are expected to participate.
- If you are not within the boundary, but along the proposed route, you may be able to participate, and further coordination will be needed.

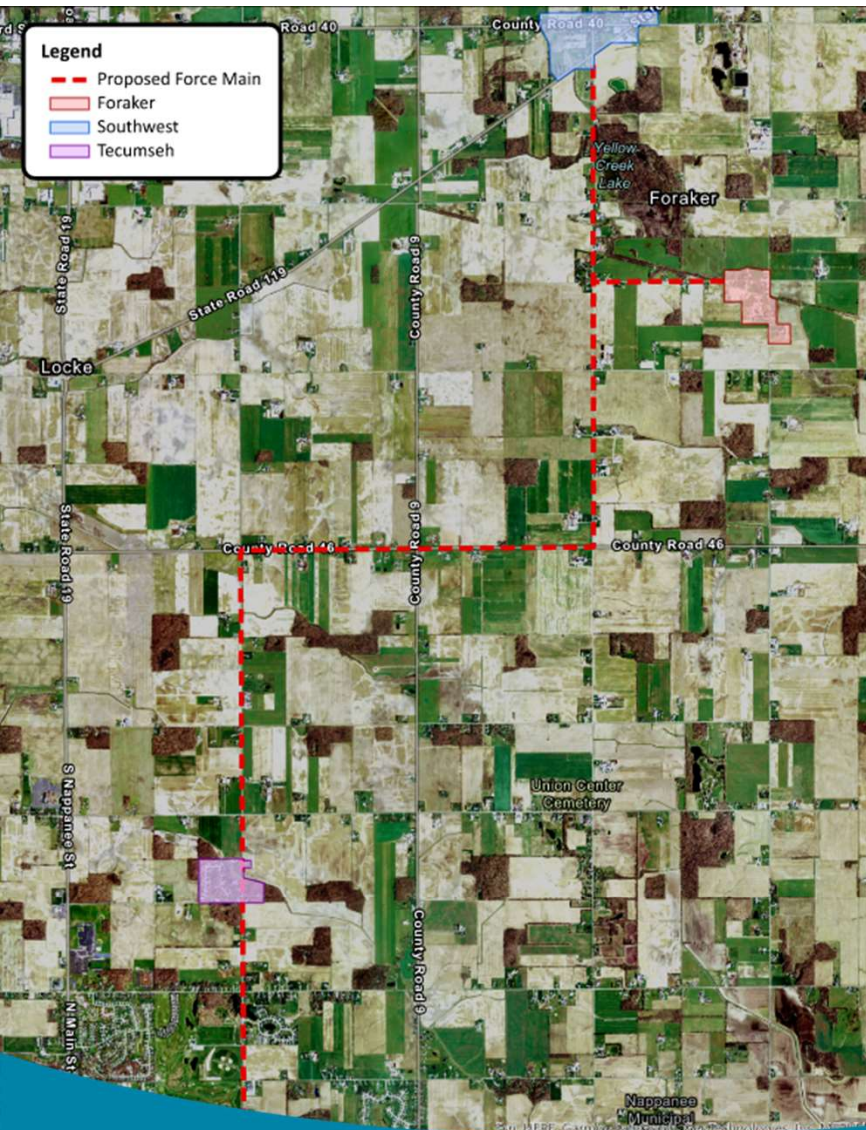
Project Exemption

- Although we believe it would be against your financial interest, if you desire to be excluded from the project, the existing septic system must meet the requirements set forth in; **IC 13-26-5-2.5 Septic tank soil absorption system exemption.**
- Opinion of cost to connection in the future if not connected with initial project is approximately \$22,000 (includes cost necessary for construction, equipment, and installation fees).

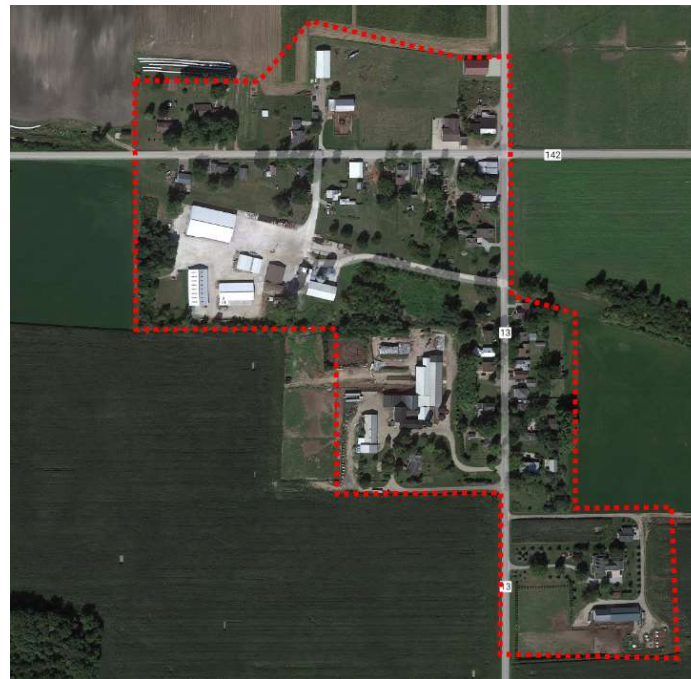
Note: ARPA and SWIF funding will fund entire estimated \$22,000 connection cost if connection is made with initial project, and property owner is fully cooperative during entire project.

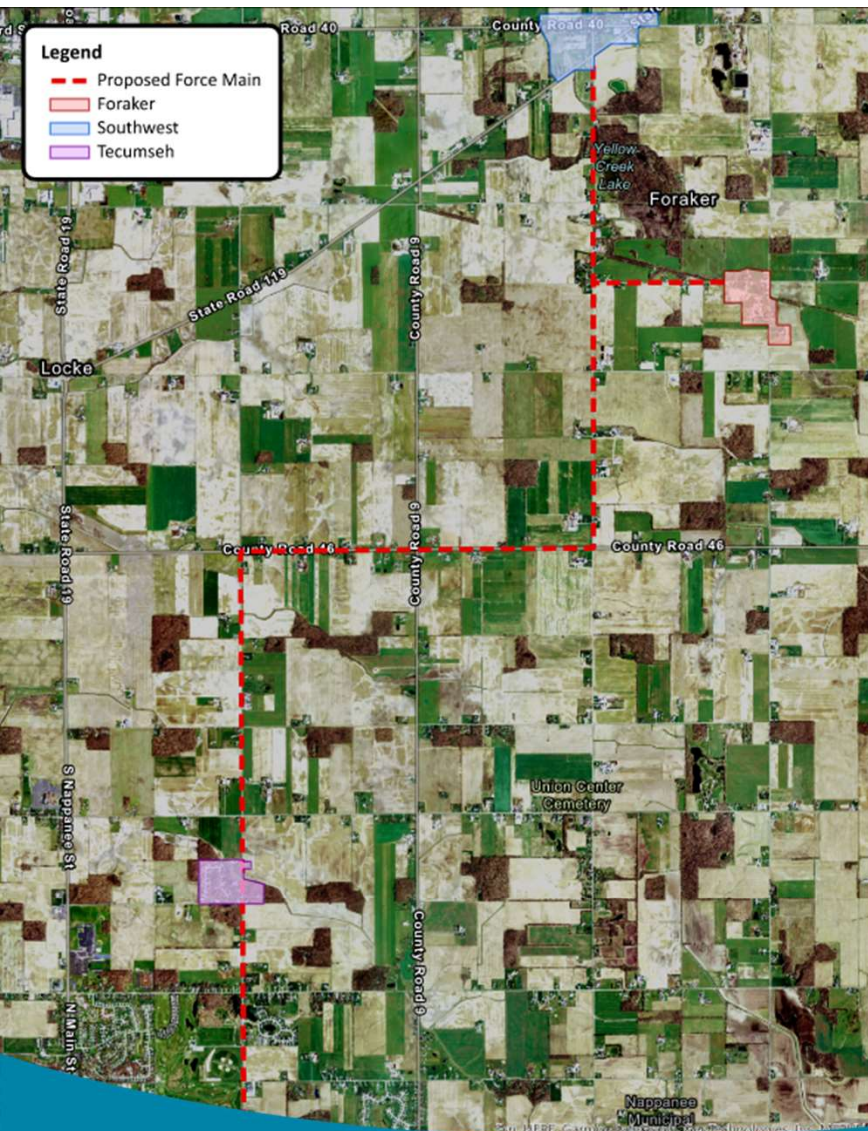
Estimated Future Connection Costs

1. Monthly Sewer Bill
2. Estimated Future Connection Costs (2022 Dollars)
 - a. Electrical Upgrade Construction: \$2,500 - \$5,000+
 - b. Septic Abandonment Construction: \$2,500
 - c. STEP System Gravity Connection from Home Construction: \$1,500
 - d. STEP System Tank/Pump Construction: \$10,000
 - e. Service Lateral (from STEP to force main) Construction: \$4,000
 - f. Total: \$20,500 - \$23,000+**



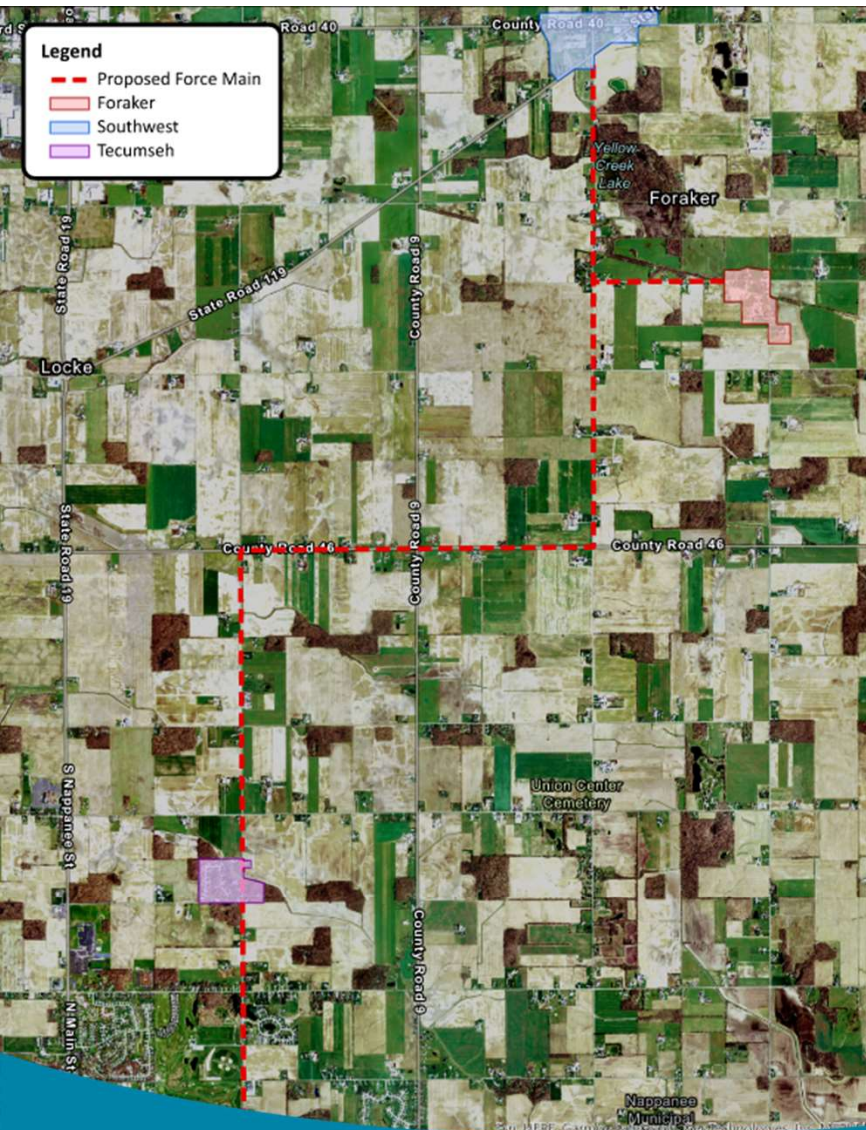
Proposed Collection System Map: Foraker





Proposed Collection System Map: Southwest



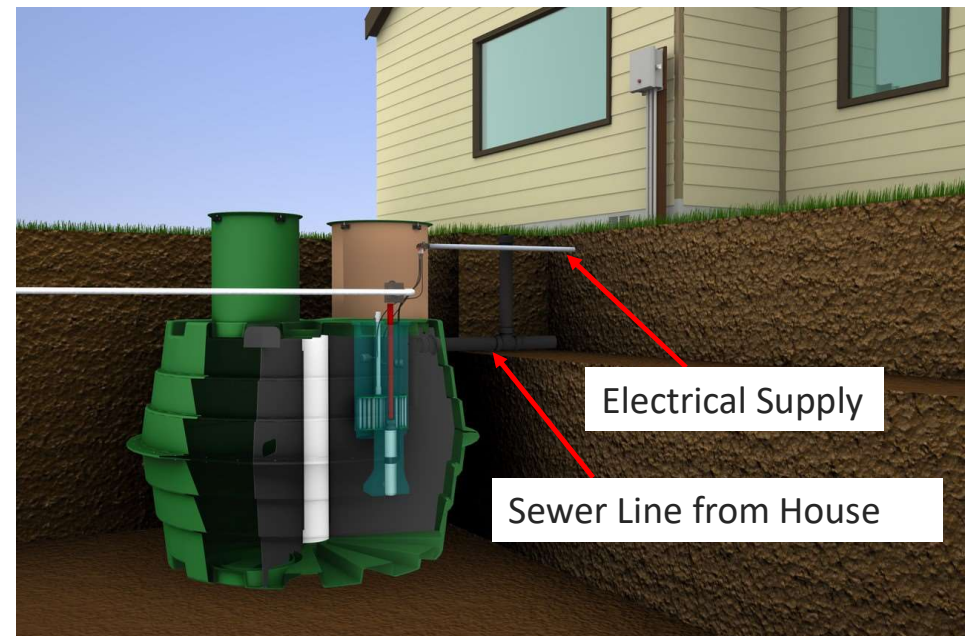


Proposed Collection System Map: Tecumseh



Proposed Collection System Technology

Septic Tank Effluent Pumping (STEP) System

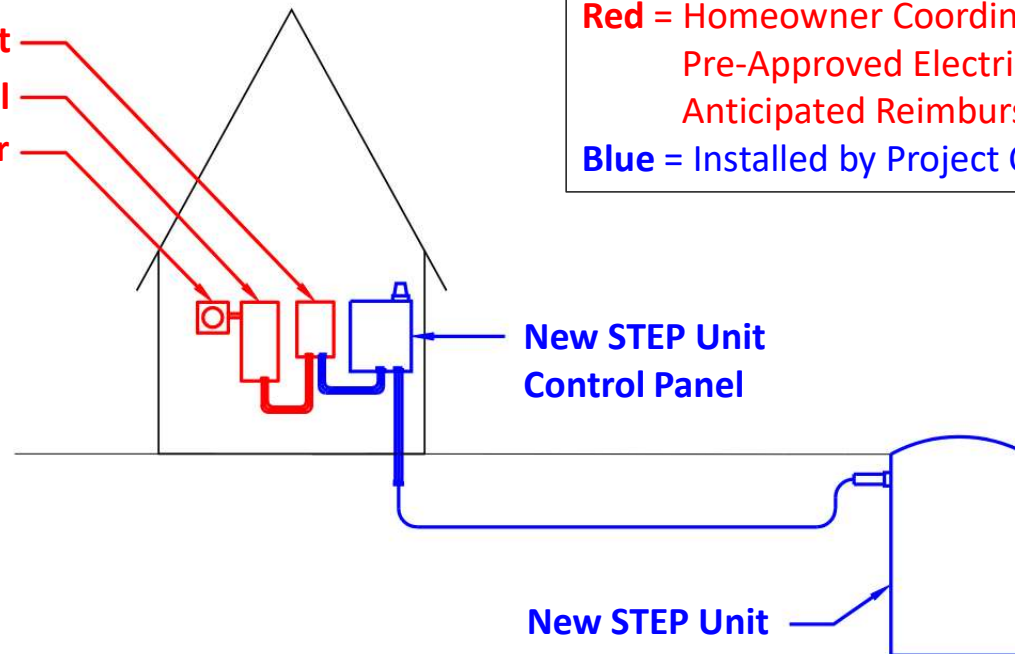


These images were provided by Orenco & permission was received to include in this presentation

Proposed Collection System Technology

Electrical Supply Coordination

New Electrical Disconnect
Existing Electrical Panel
Existing Electrical Meter

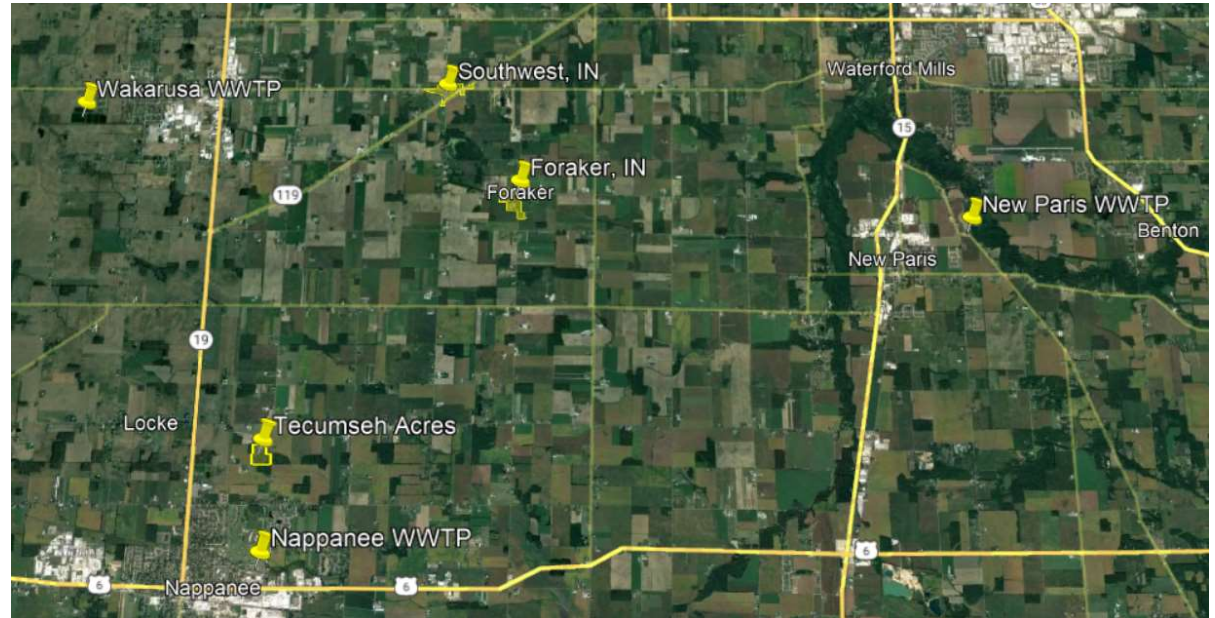


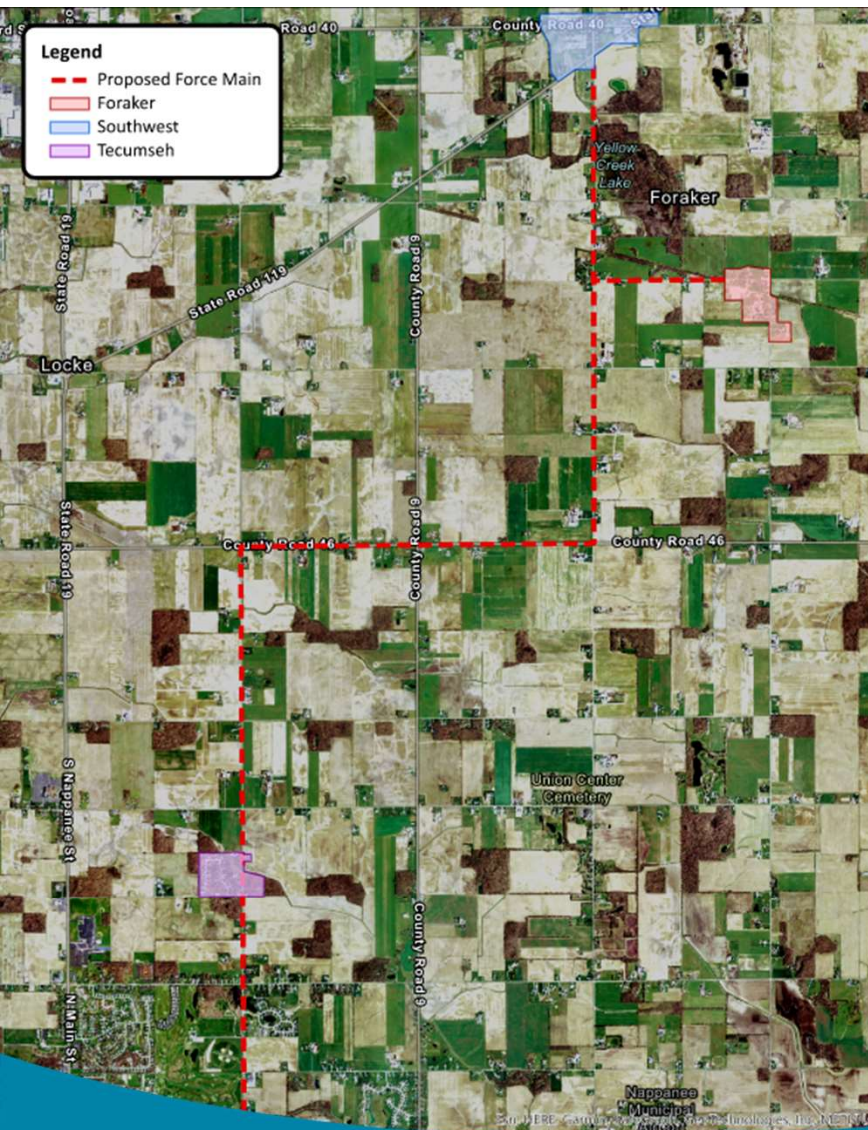
LEGEND

Red = Homeowner Coordination with
Pre-Approved Electrical Contractor with
Anticipated Reimbursement
Blue = Installed by Project Contractor

Options Considered

- Local Treatment
- Treatment at Wakarusa
- Treatment at New Paris
- Treatment at Nappanee





Proposed Treatment at Existing Nappanee WWTP

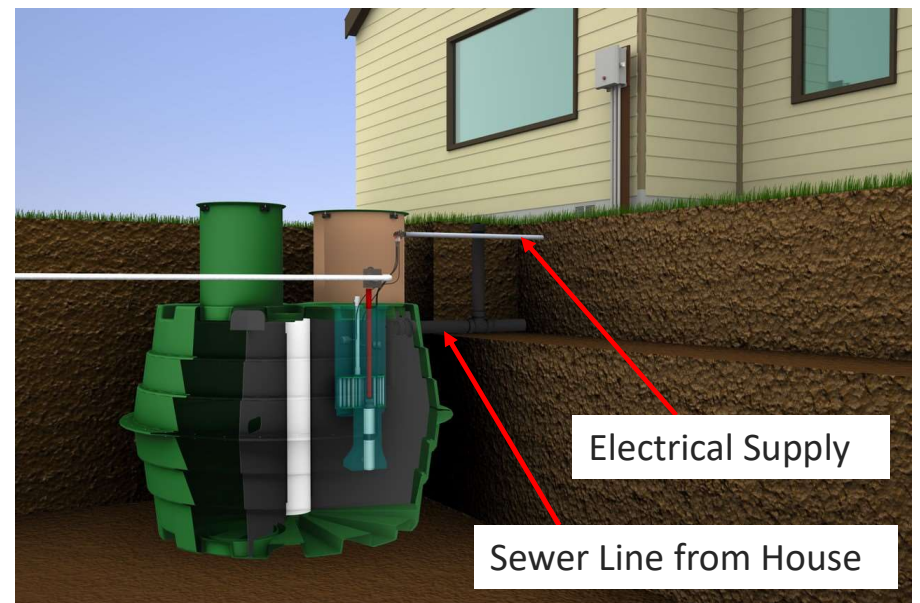


STEP System Ownership (Easements)

- Temporary Easement for Construction
 - Existing Septic Tank Abandonment
 - Electrical
 - New STEP Unit
- Permanent Easement for Operation, Maintenance, & Replacement
 - STEP Unit
 - Sewer Lateral from STEP Unit to Force Main

STEP System Ownership

- ECRSD Responsible for Operation, Maintenance, & Replacement
 - STEP Unit Inspection
 - STEP Unit Solids Removal
 - STEP Unit Pump Maintenance and Replacement



Estimated Project Funding and User Rates

- Estimated Project Cost - \$9.28 million
- No Debt Issuance
 - \$1.875 million (State Grant)
 - \$7.405 million (County American Rescue Plan Contribution)
- Estimated Connection Costs
 - Paid for by County (septic abandonment, new STEP system, electrical reimbursement)
- User Rate Components
 - Operation and Maintenance (treatment, repair/maintenance, administrative, etc.)
 - Debt Service (not applicable for this project)
 - Short-Lived Asset Replacement (County prefunding first 2-3 years)
- Estimated Number of Users (110-135)
- Estimated Monthly User Rate per Equivalent Dwelling Unit is \$85-\$95

Project Bidding, Construction, & Operations

- Project will be competitively bid
 - Estimated date for bidding is January 2023
- Estimated Construction start: Late spring/early summer 2023
- Construction is expected to last approximately 18 months
- Start of Operations of System is anticipated in 2024



Next Steps

- Meetings with individual property owners to discuss planned location of STEP systems
- Easement Agreements



Questions / Comments