

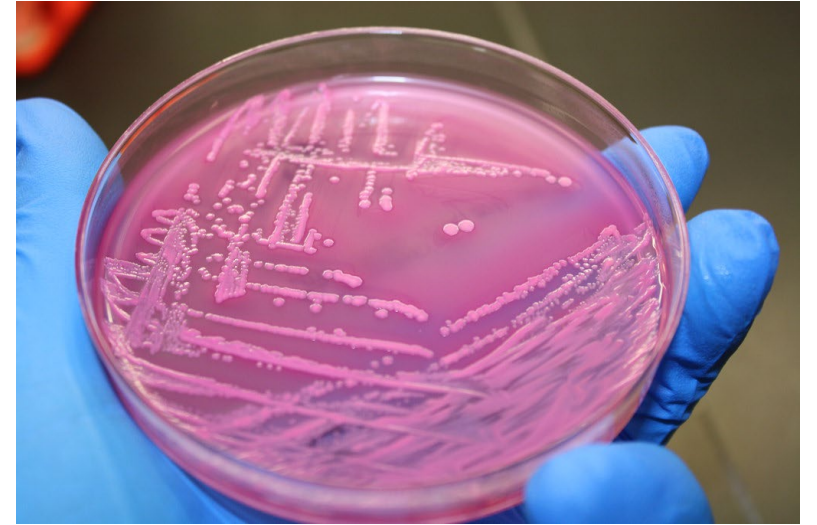
The information and images identified in these slides have been provided by:

Dr. Katherine Barrett, PhD

A glance at water quality trends in Yellow Creek CR 138, Weaver Ditch CR 13, and Christiana Creek CR 4 for the years 2020 – 2021

Focusing on *E. coli* & TSS

- ***E. coli*** (bacteria indicative of fecal contamination; water quality standard for full body contact is 235 colony-forming units per 100 milliliter sample)
- **TSS** (total suspended solids; cloudiness of the water; water quality standard is 30 milligrams per Liter of sample)



[This Photo](#) by Unknown Author is licensed under [CC BY](#)



[This Photo](#) by Unknown Author is licensed under [CC BY](#)

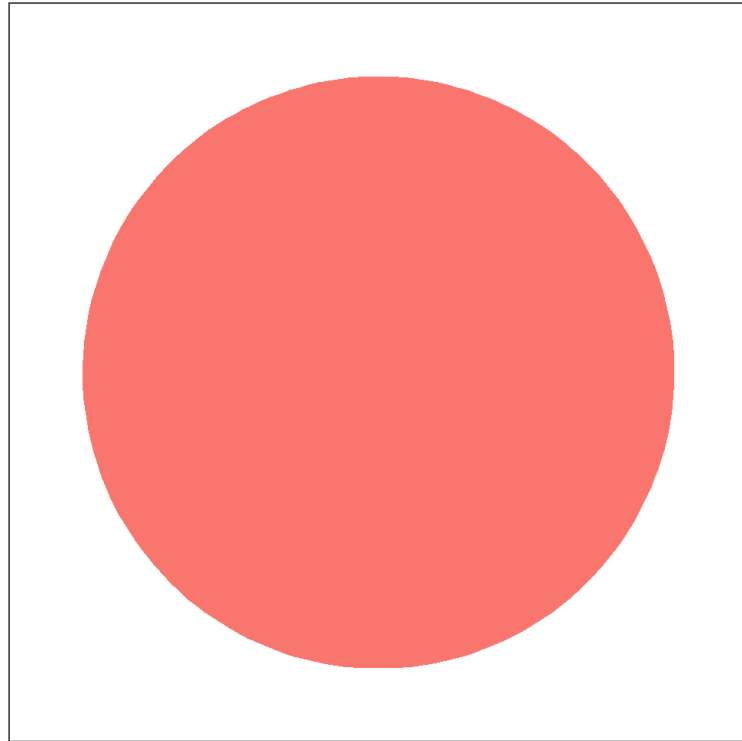
About the graphs

- For each stream, 2 pie charts are presented:
 - One for *E. coli*
 - One for TSS
- The pie charts show the percentage of the total number of samples taken at each site from 2020 – 2021 that exceed or meet the water quality standards for *E. coli* & TSS
 - Red = exceeding standard (FAIL)
 - Blue = meeting or below standard (GOOD)

From each pie chart, a site is graded either **PASS** or **FAIL** based on how much of the pie is red or blue.

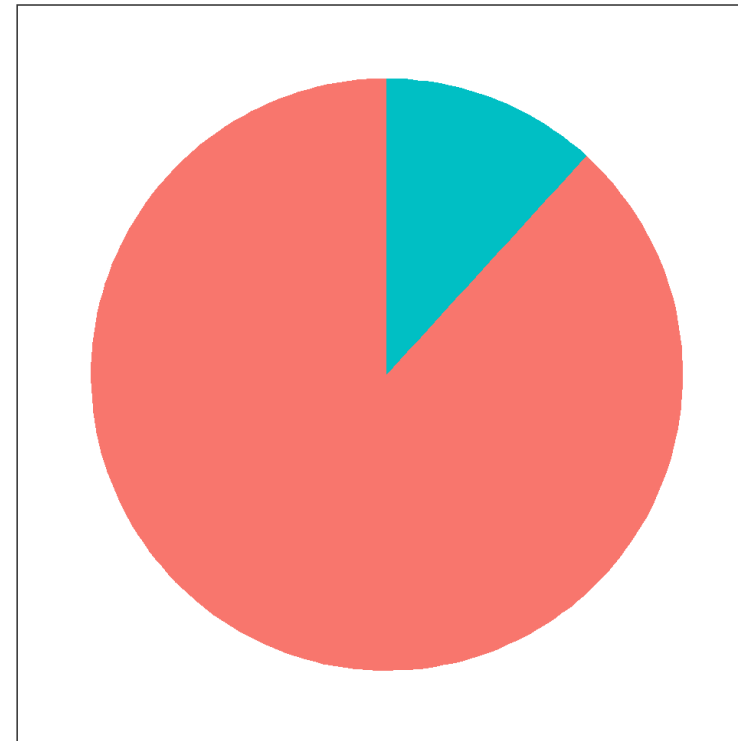
Weaver Ditch CR 13 by Foraker: 2020 – 2021

Weaver Ditch CR 13 E. coli



FAILED ECOLI

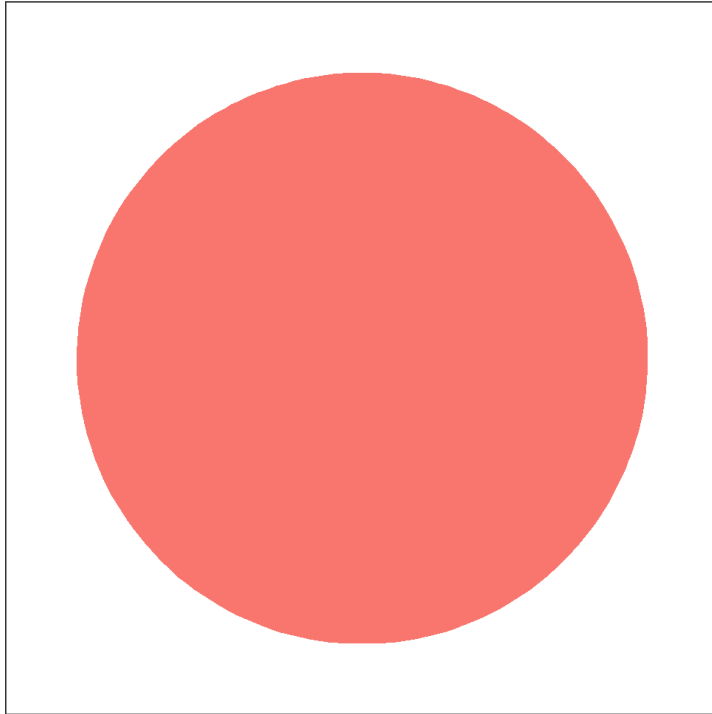
Weaver Ditch CR 13 TSS



FAILED TSS

Yellow Creek CR 138 by Southwest: 2020 – 2021

Yellow Creek CR 138 E. coli

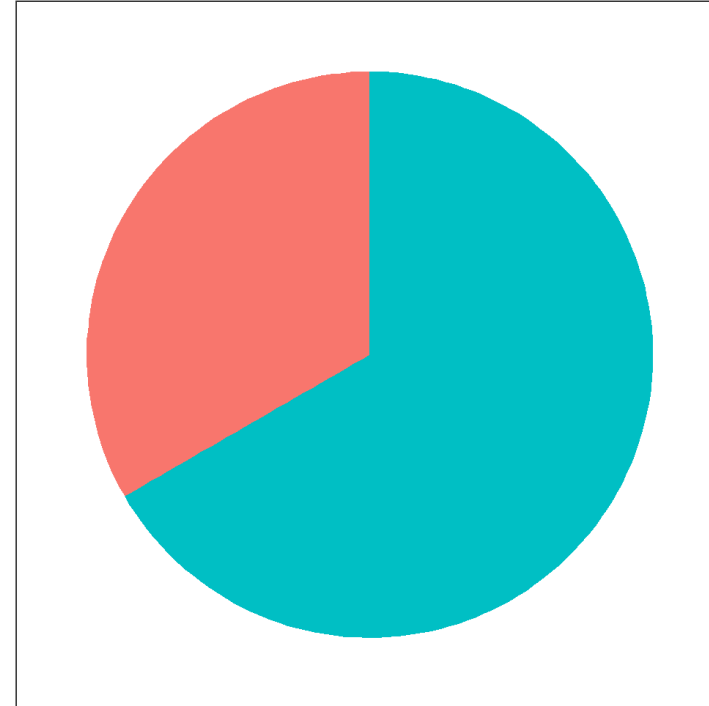


value

- Exceeding
- Not-exceeding

FAILED ECOLI

Yellow Creek CR 138 TSS



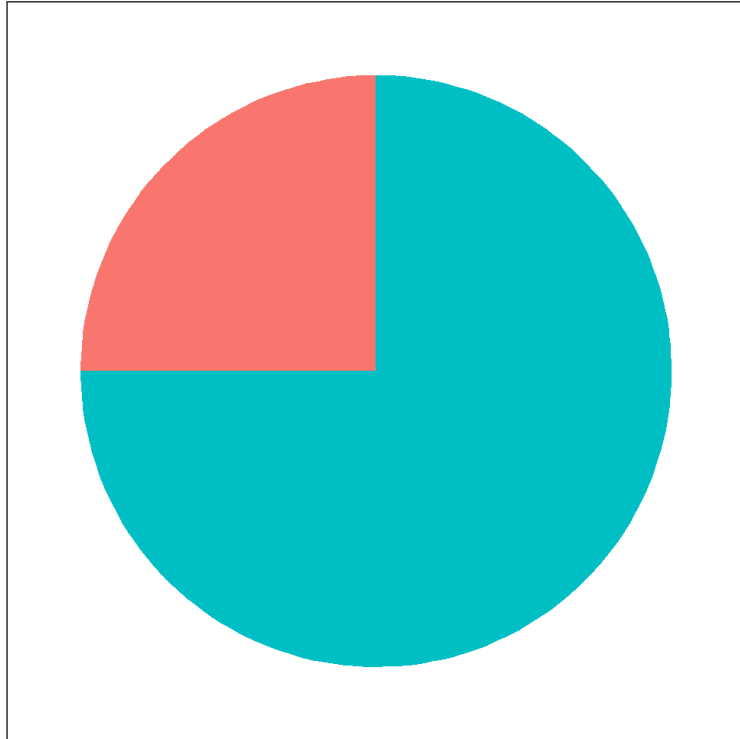
value

- Exceeding
- Not-exceeding

PASSED TSS

Christiana Creek CR 4 by Elkhart: 2020 – 2021

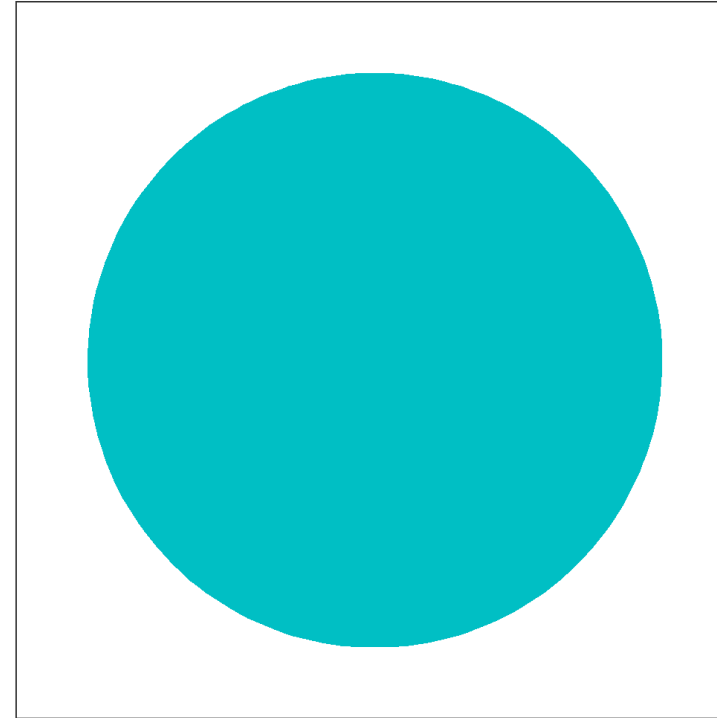
Christiana Creek CR 4 E. coli



value
Exceeding
Not-exceeding

PASSED ECOLI

Christiana Creek CR 4 TSS



value
Exceeding
Not-exceeding

PASSED TSS